



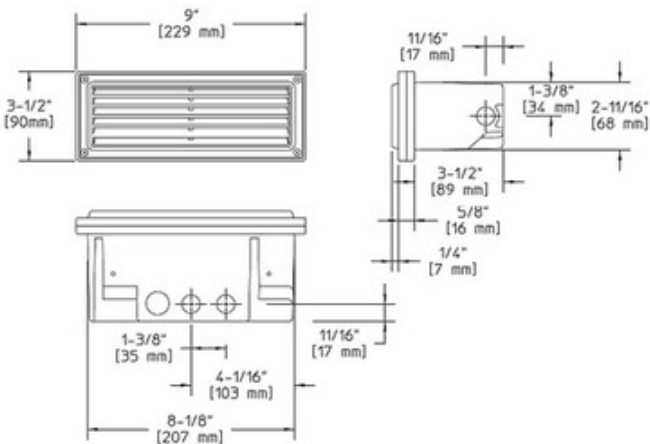
BRAND Hadco by Signify

DESCRIPTION

RSCL2 Louver Bricklyte features a thermoset polyester powdercoat finish available in Black, White or Bronze. Horizontal louver lens constructed of die-cast aluminum with a 45 degree cut-off and frosted tempered glass. Die-cast aluminum back box housing. Fixture is pre-wired with 6 foot pigtail of 18-2 AWG wire. Includes low voltage quick connector LVC3 for easy hook-up to the low voltage supply cable not included. Thermal protection device, not included, is required for installations in drywall, plaster, wood or other non-masonry materials.Two 18 watt S8 single contact bayonet base halogen lamps included. Faceplate dimensions are 3.5 inches high x 9 inches wide. Housing dimensions are 2.7 inches high x 8.1 inches wide x 4.7 inches deep. ETL listed for wet locations. Requires remote transformer not included.



SHADE COLOR	Frosted
BODY FINISH	Black
WATTAGE	36W
DIMMER	Dimmable
DIMENSIONS	9"W x 3.5"H x 4.7"D
BULB INCLUDED	
LAMP	2 x JD/D.C. Bayonet (BA15D)/18W/120V Halogen



SPEC # HAD120431

COMPANY	PROJECT	FIXTURE TYPE	APPROVED BY	DATE