

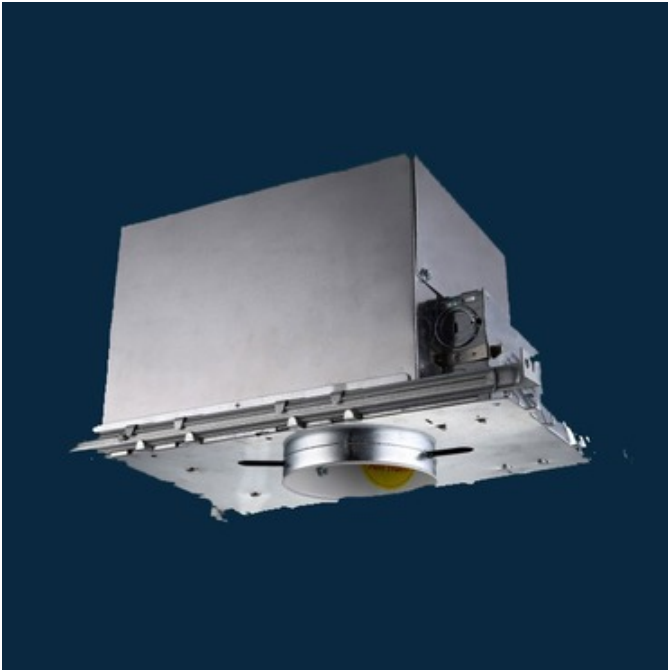


BRAND

Beach Lighting

DESCRIPTION

R3-499ICA 3 inch IC Airtight New Construction Housing is made of aluminum and adjusts up to 1.75 inch ceiling thickness. IC designation allows for direct contact with insulation on all sides of housing. Airtight feature prevents airflow between attic and living areas. Meets restricted airflow requirements. One 35 watt 12 volt GU5.3 MR16 halogen lamp or LED equivalent is required, but not included. Supplied with a low voltage magnetic transformer. Halogen dimmable with a low voltage magnetic dimmer. LED dimmable per lamp manufacturer recommendation. Must be dimmed using a low voltage magnetic dimmer. ETL listed. 3.1 inch diameter opening x 7.5 inch housing height. For use with R3 3 Inch GU5.3 MR16 compatible trims, sold separately.



TRIM COLOR	N/A
BODY FINISH	Galvanized Steel
WATTAGE	35W
DIMMER	Dimmable
DIMENSIONS	3.1"W x 7.5"H
BULB NOT INCLUDED	
LAMP	1 x MR16/GU10/35W/120V Halogen 1 x MR16/GU5.3 (bipin)/12V LED
Technical Information	
CEILING TYPE	Drywall with Trim
HOUSING TYPE	New construction IC Airtight
HOUSING HEIGHT	8"
SPEC #	BEA36924

COMPANY	PROJECT	FIXTURE TYPE	APPROVED BY	DATE