



**DESIGNER**

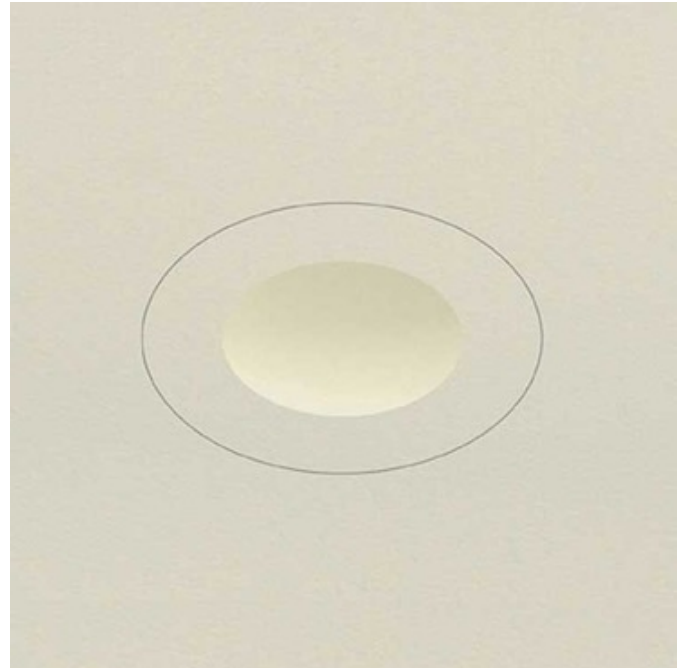
Gregory Kay

**BRAND**

PureEdge Lighting

**DESCRIPTION**

Aurora Halogen 2 Inch Round Edge Invisible Downlight with Housing is a specification grade, recessed adjustable accent fixture for plaster or drywall construction. A flush mounted rigid plaster plate, which is finished into the ceiling, maintains a flat finish. Combining the 3.5 inch trim and knife edge 2 inch aperture with the Aurora dome and tilt gear hidden behind the lamps creates a clean internal look. Invisible, flush trim installs into the plaster plate with a precision snap-fit. Fixture offers hot aiming with 0 to 42 degree vertical adjustment and 362 degree horizontal rotation without beam clipping. Precision machined gear adjustment is concealed behind the lamp. Features self locking tilt and manual locking horizontal rotation. Includes machined aluminum snoot and die formed aluminum back shield controls internal spill light. The snoot carries the lamp and two optional light control accessories, sold separately. A soft focus lens is included. Housing is made of die formed aluminum and includes one 12 volt 75 watt toroidal magnetic or electronic low voltage transformer. Housing is IC and Air-Tight, suitable for remodel or new construction. Dome features an anodized soft haze finish. Dome hides electrical hardware and tilts for easy access to junction box and transformer. One 12 volt GU5.3 base MR16 50 watt IR (infrared up to 50 watt halogen) is required, but not included. Optional Aurora Gear Cover and light control accessories sold separately.

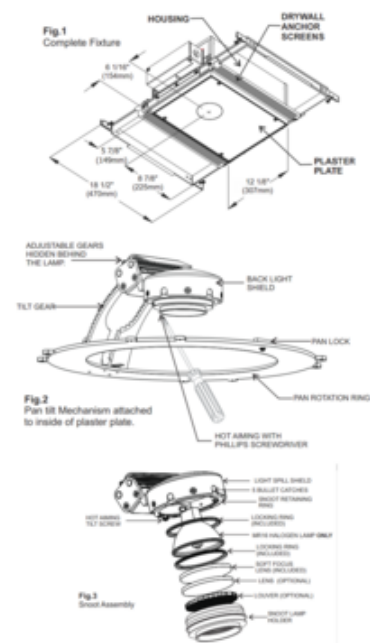


TRIM COLOR	N/A
BODY FINISH	White
WATTAGE	50W
DIMMER	Low Voltage Magnetic
DIMENSIONS	15.75"L x 9.25"W x 5.25"H
BULB NOT INCLUDED	
LAMP	1 x MR16/GU5.3 (bipin)/50W/12V Halogen 1 x MR16/GU5.3 (bipin)/12V LED

*Technical Information*

FUNCTION	Adjustable Accent
CEILING TYPE	Drywall Trimless/Flush
HOUSING TYPE	New construction IC Airtight
HOUSING HEIGHT	6"
APERTURE SHAPE	Round
APERTURE SIZE	2.000"

SPEC # EDG46309



COMPANY	PROJECT	FIXTURE TYPE	APPROVED BY	DATE