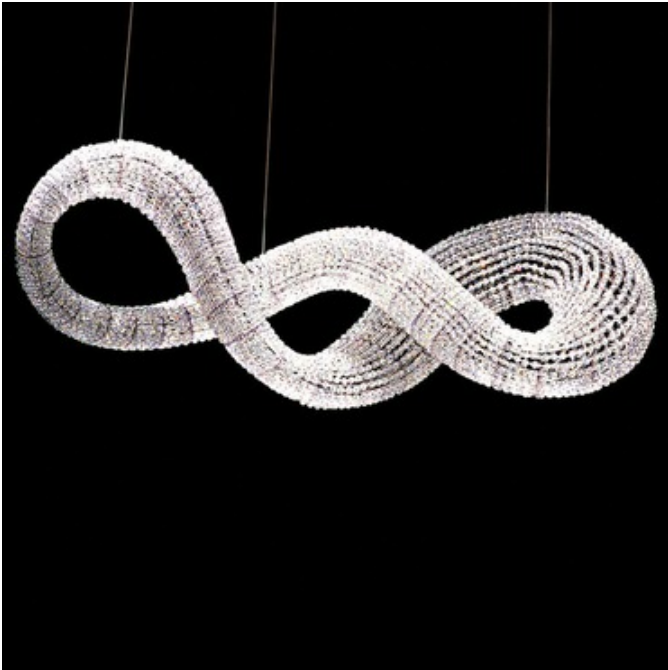




BRAND Swarovski Crystal Palace

DESCRIPTION

Mini Voyage is a scaled down version of the original chandelier conceived by Yves Behar for Swarovski Crystal Palace. The original was a 177.17 inch structure installed at New York's JFK airport as an allegory to the continuous movement that travel represents. Mini Voyage retains the design qualities of the original and contains 10,000 Swarovski crystals, lit internally with white LEDs. Available in both lit and non-illuminated options. Includes (4) 44 watt white LED chains. Reinforced junction box required to support extra weight. General light distribution. UL and cUL listed. Designed by Yves Bhar. 79W x 31.5H x 27.5L.



SHADE COLOR	Crystal
BODY FINISH	Stainless Steel
WATTAGE	176W
DIMMER	N/A
DIMENSIONS	27.5"L x 79"W x 31.5"H
BULB INCLUDED	
LAMP	4 x LED/44W/120V LED
SPEC #	SCP60460

COMPANY	PROJECT	FIXTURE TYPE	APPROVED BY	DATE