

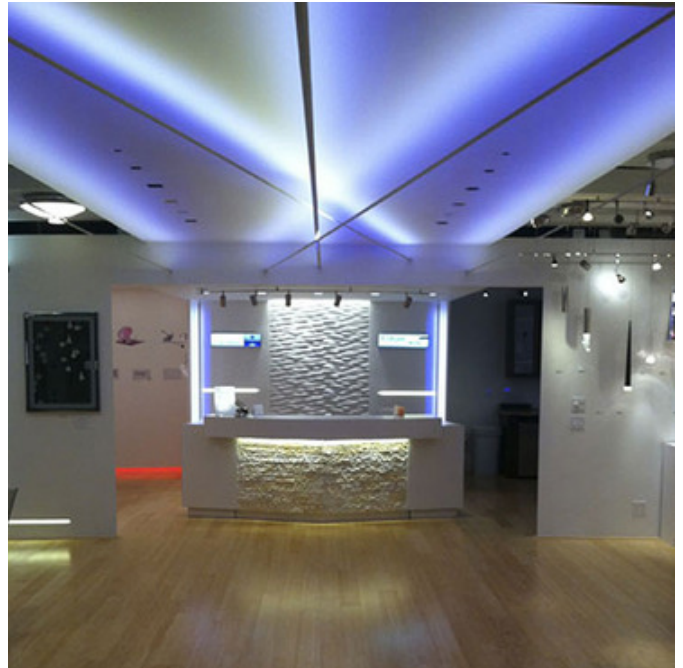


BRAND

PureEdge Lighting

DESCRIPTION

Soft Line LED System for Indirect Lighting uses RGB+ White to provide soft, ambient, indirect illumination for decorative and architectural applications. For compact shipment and storage, Soft Line coils like a retractable tape measure. When uncoiled, the Soft Line becomes a 1.25 inch wide cupped aluminum channel that can be mounted on any angle between opposing wall, ceiling or floor surfaces. SLD-RGB features two rows of 24 volt Soft Strip in Red, Green, Blue + White (2700K or 3000K) color temperature and is field-cuttable. Includes power feed and non-power feed turnbuckles. Turnbuckles support Soft Line on any angle from 0-60 degrees, feed power from one end and mount to a standard 4 inch square electrical box with round plaster ring. Turnbuckles may be reversed and mounted (opposite the power feed) to a ceiling, wall or floor. Requires an RGB Power Supply with DMX Driver, sold separately. ETL listed. Fixture includes a 5 year warranty. Power supply, standoff, and controller sold separately.



SHADE COLOR	N/A
BODY FINISH	Satin Aluminum
WATTAGE	51W
DIMMER	Dimmable
DIMENSIONS	120"L x 1.25"W
INTEGRATED LED MODULE	
LAMP	10 x LED/5.1W/24V LED

Technical Information

LAMP COLOR	3000K
COLOR RENDERING	95 CRI
LAMP LIFE	50000 hours

SPEC #	EDG69739
--------	----------

COMPANY	PROJECT	FIXTURE TYPE	APPROVED BY	DATE