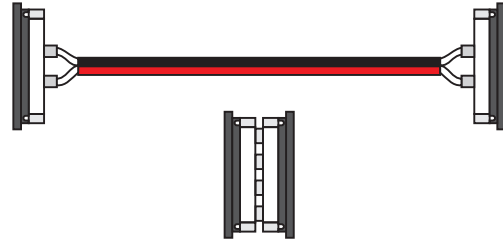


Installation Instructions for Soft Strip Goof Straight & 3" Flex Connector

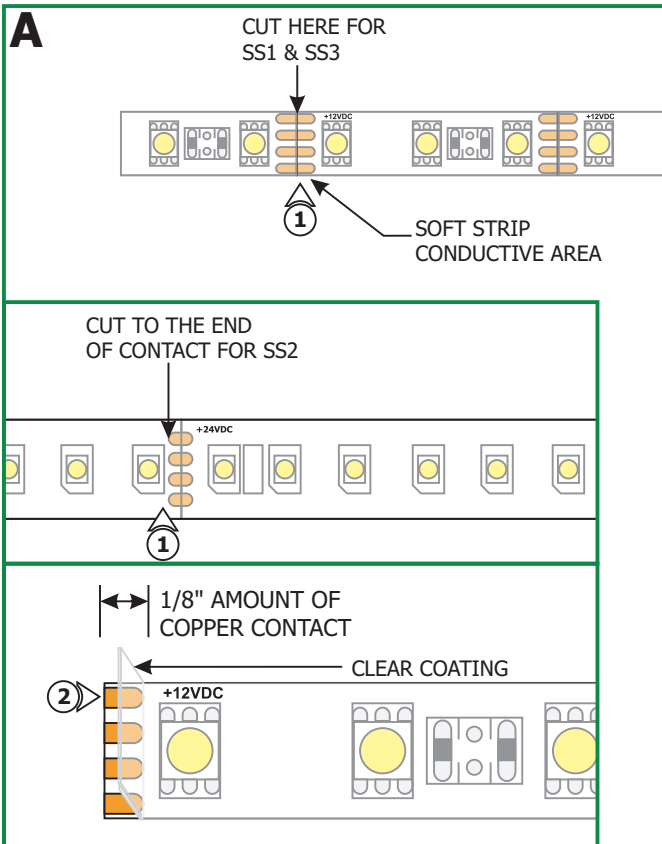
IMPORTANT INFORMATION

- This product should be used with Edge Lighting Warm White and Very Warm White soft strip only.

SAVE THESE INSTRUCTIONS!



Install the Soft Strip into Goof Connector

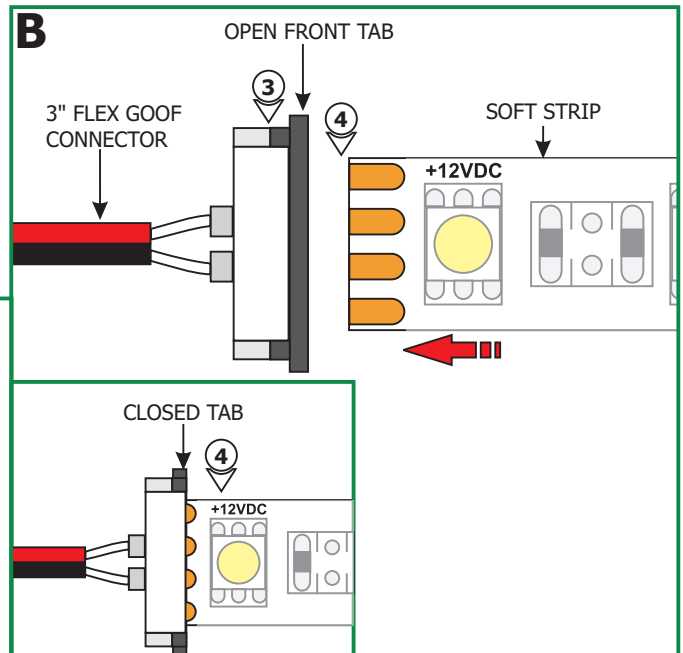


NOTE: The goof connectors are used to connect two soft strips together when the ends are cut by accident. Please note that when joining two cut section of the soft strips together, the total length of the soft strip should not exceed the maximum allowance as is indicated in soft strip spec sheet or the installation instructions.

NOTE: About 1/8" of the copper contact on the soft strip is needed for the goof connectors. The SS1 and SS3 soft strip can be cut in the middle of the copper junction, however the entire SS2 copper junction is needed.

1: Cut the copper junction in proper location at the end of the soft.

2: Using a sharp knife remove the clear coat from the copper junction.



NOTE: Make sure the red wire is in line with +12VDC or +24VDC marking of the soft strip.

- 3:** Pull out the front tab of the goof connector to clear the opening.
- 4:** Insert the copper junction of the cut soft strip completely into the goof connector and push the front tab in to lock the goof connector in place.
- 5:** Repeat step 4 for the other side and the other soft strip section.