



Description: Verge channels emit ambient illumination to soften the aesthetic of a space, imparting a sense of harmony and tranquility; single extrusion runs create dramatic cove or toe-kick effects while multiple extrusions deliver the effect of illuminated corners or floating walls. A slim, plaster-in aluminum channel with 4" paintable aluminum backer plate houses a single row of high CRI, commercial grade white or RGB Soft Strip LEDs. The 24VDC linear LED system mounts directly to studs without joist modification and plasters into 5/8" or thicker drywall. Verge is sold in 5 foot increments up to 40 feet and may be field-cut to any length. LED Soft Strip may be cut every 2.4 inches. Coordinate installation with electrician and drywall contractors. Fixture includes a 5 year warranty.

Applications: Indoor Only—Toe-kicks, cove lighting, glowing corners, door frames and floating wall effects for hospitality, retail and residential environments.

Lamp:

Watts per Foot	Lumens per Watt	85+CRI 24k, 35K, 40K, 57K	95+CRI 27K, 30K	RGB
2WDC	57 186	•	•	
3WDC	N/A N/A			•

Lumen values are based on the 3000K LED test.

Average Lamp Life: 50,000 hours

Power Supply: White LED system, compatible Electronic Low Voltage Dimming (ELV) 120-277VAC input: PSB-60W-ELV-24VDC (24VDC 60W output) | PSB-100W-ELV-24VDC (24VDC 100W output) | PSB-2X100W-ELV-24VDC (24VDC 2X100W output).

White LED system, compatible 0-10 Volt Dimming (010) 120-277VAC input: PSB-96W-010-24VDC (24VDC 96W output) | PSB-2X96W-010-24VDC (24VDC 192W output).

In Wall Mounting Kits: PSC-IW-KIT1 (96W or 100W) | PSC-IW-KIT2 (2X96W or 2X100W).

RGB LED System: Remote RGB Power supply with DMX Driver

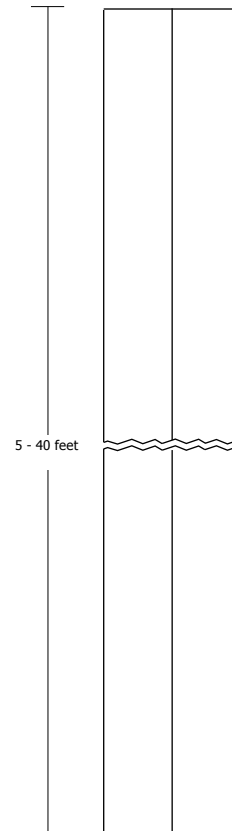
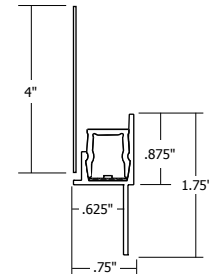
100W: 120-277VAC input; 200W and 400W: 120/240VAC input

PSB-100W-24VDC-RGB (24VDC 100W output) | PSB-200W-24VDC-RGB (24VDC 200W output)

PSB-400W-24VDC-RGB (24VDC 400W output)

Dimming and Control: White LED system dimmable with 0–10V dimmer using power supplies above. Radio Ra2 (with GRX-TVI), Grafik Eye Qs (with GRX-TVI), Diva (with PP20); Nova T; Philips: Sunrise SR1200ZTUNV; Leviton: IP710-DL. RGB LED system - Touch Screen Controller with Power Supply (CTP), or Color Dial Controller with Power Supply (CDP).

Included Components: Verge channel, LED Soft Strip, Verge special junction box, counter sink bit to mount extrusion and backer plate, all required mounting hardware and paintable aluminum backer plate. See page 3 of specification sheet for additional details.



VERGE 24VDC ORDERING CODES

VERGE STANDARD CHANNEL

System	Wattage	Length in Feet	Color Temperature
VG - Verge	2WDC 2.5 Watts/Foot (White only)	10 10 Feet	24K 2400K Amber White
	3WDC 3 Watts/Foot (RGB only)	15 15 Feet	27K 2700K Very Warm White
		20 20 Feet	30K 3000K Warm White
		25 25 Feet	35K 3500K Neutral White
		30 30 Feet	40K 4000K Cool White
		35 35 Feet (RGB max)	57K 5700K Daylight White
		40 40 Feet (White max)	RGB Red, Green and Blue

VERGE DOOR FRAME CHANNEL

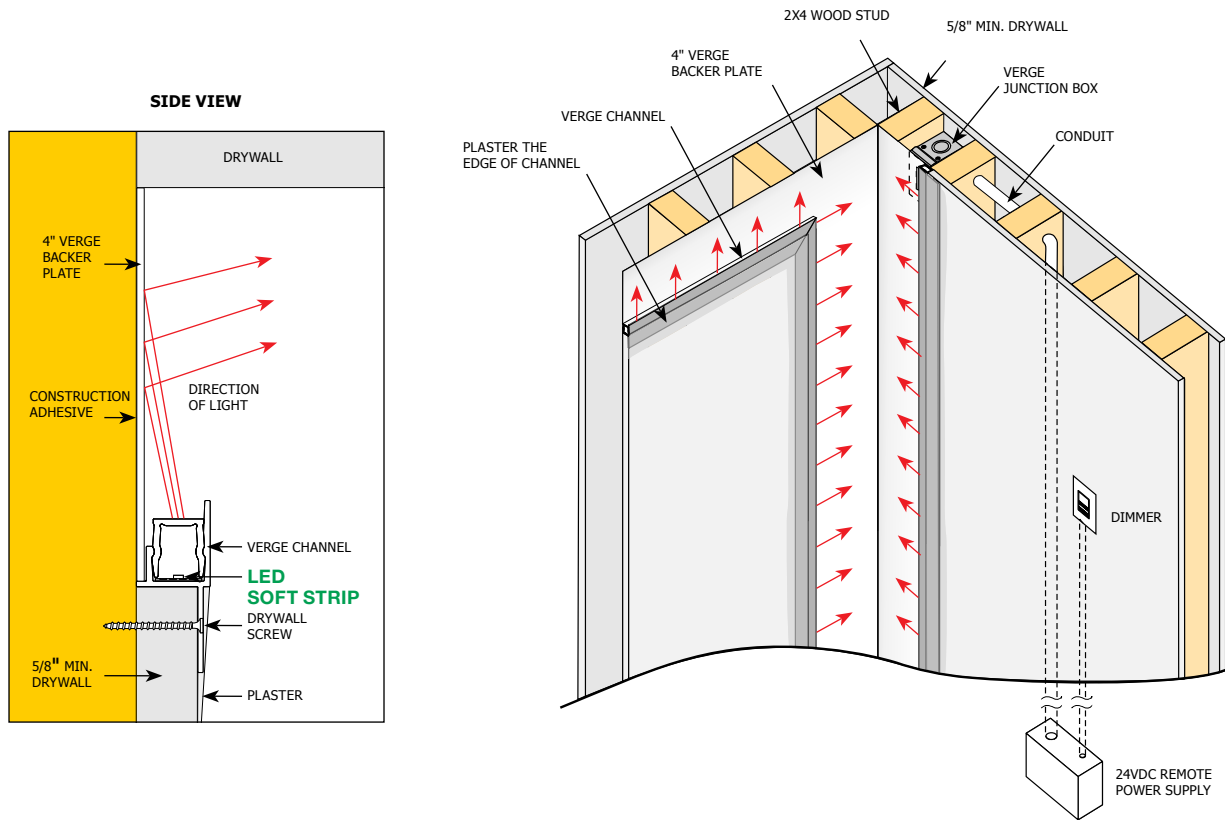
System	Length in Feet	Color Temperature
VGDF - Verge Standard Door Frame	18 18 - 22 Feet (VGDF)	24K 2400K Amber White
		27K 2700K Very Warm White
VGWDF - Verge Wide Door Frame	23 23 - 27 Feet (VGWDF)	30K 3000K Warm White
		35K 3500K Neutral White
		40K 4000K Cool White
		57K 5700K Daylight White
		RGB Red, Green and Blue

COMPANY		FIXTURE TYPE		DATE	
PROJECT		APPROVED BY			

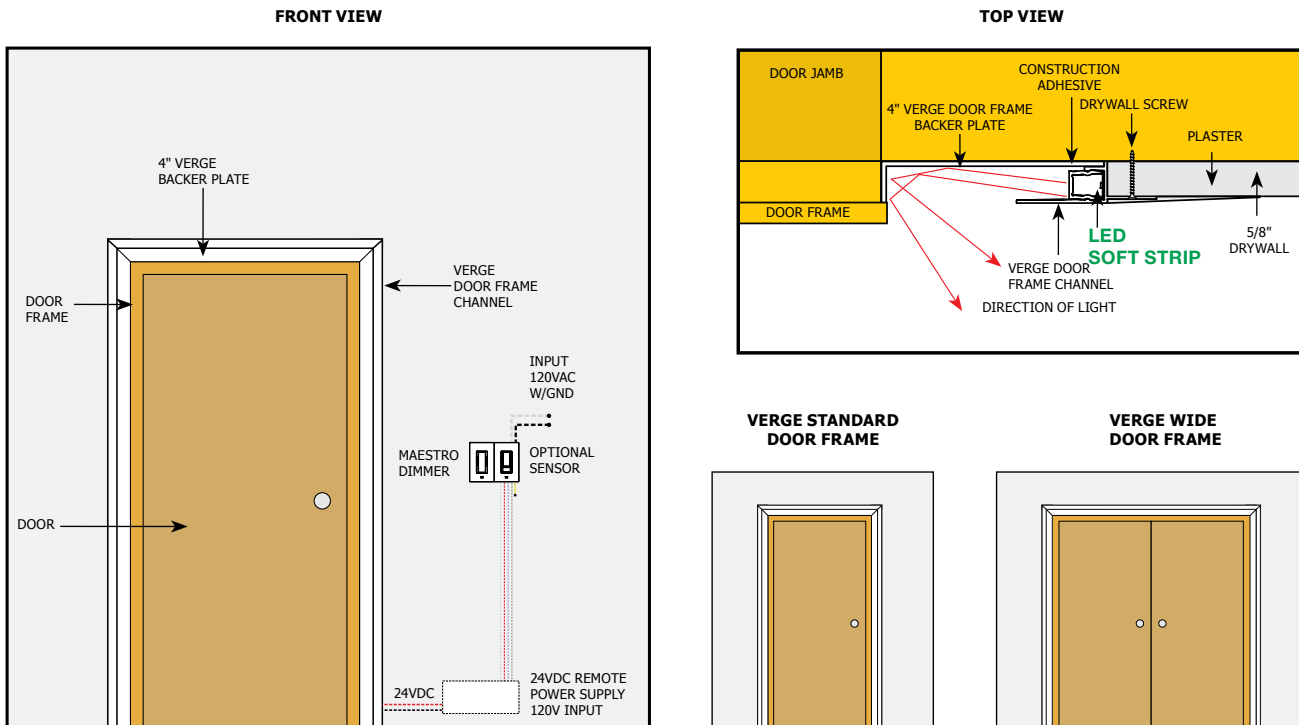
Product specification subject to change without notification. REV. 06.30.14



VERGE STANDARD APPLICATION



VERGE DOOR FRAME APPLICATIONS



COMPANY		FIXTURE TYPE		DATE	
PROJECT		APPROVED BY			

Product specification subject to change without notification. REV. 06.30.14

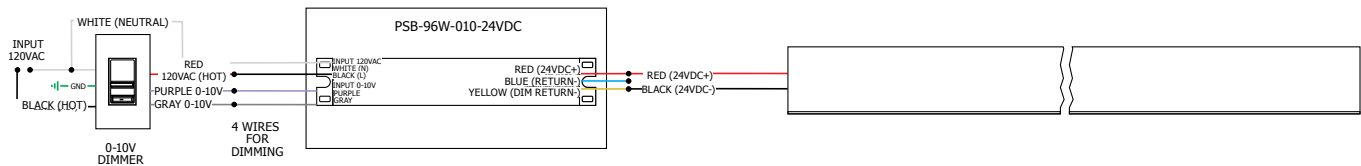
A Division of PureEdge Lighting 1718 W. Fullerton Chicago, IL 60614 • Ph: 773.770.1196 • Fax: 773.883.6128 • www.purelighting.com



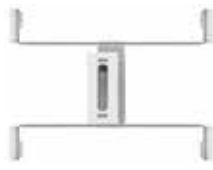
Application: 0-10V dimming for Verge

Power Supply: **White LED system, compatible Electronic Low Voltage Dimming (ELV) 120-277VAC input:** PSB-60W-ELV-24VDC (24VDC 60W output) | PSB-100W-ELV-24VDC (24VDC 100W output) | PSB-2X100W-ELV-24VDC (24VDC 2X100W output).
White LED system, compatible 0-10 Volt Dimming (010) 120-277VAC input: PSB-96W-010-24VDC (24VDC 96W output) | PSB-2X96W-010-24VDC (24VDC 192W output).
In Wall Mounting Kits: PSC-IW-KIT1 (96W or 100W) | PSC-IW-KIT2 (2X96W or 2X100W).
RGB LED System: Remote RGB Power supply with DMX Driver
 100W: 120-277VAC input; 200W and 400W: 120/240VAC input
 PSB-100W-24VDC-RGB (24VDC 100W output) | PSB-200W-24VDC-RGB (24VDC 200W output) | PSB-400W-24VDC-RGB (24VDC 400W output)

Dimming: White LED system dimmable with 0-10V dimmer using power supplies above. Radio Ra2 (with GRX-TVI), Grafik Eye Qs (with GRX-TVI), Diva (with PP20); Nova T; Philips: Sunrise SR1200ZTUNV; Leviton: IP710-DL. RGB LED system - Touch Screen Controller with Power Supply (CTP), or Color Dial Controller with Power Supply (CDP).



INCLUDED COMPONENTS



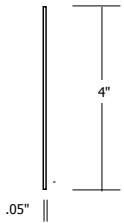
VERGE JUNCTION BOX

Slim profile junction box mounts behind drywall. Low voltage DC wires from remote power supply connect to LED wires. Junction box opening covered by Verge for a clean, safe connection.



LED SOFT STRIP

Commercial grade white or RGB LED Soft Strip. See Lamp data on page 1 of spec sheet for additional details.



BACKER PLATE

The 4" paintable aluminum backer plate houses a single row of high CRI, commercial grade white or RGB Soft Strip.

COMPANY		FIXTURE TYPE		DATE	
PROJECT		APPROVED BY			

Product specification subject to change without notification. REV. 06.30.14

ACTUAL WATTAGE PER FOOT - RGB LEDS

LENGTH IN FEET	TOTAL WATTAGE
1	3
2	6
3	8
4	11
5	13
6	16
7	19
8	21
9	24

LENGTH IN FEET	TOTAL WATTAGE
10	26
11	29
12	32
13	34
14	37
15	39
16	42
17	45
18	47

LENGTH IN FEET	TOTAL WATTAGE
19	50
20	52
21	55
22	58
23	60
24	63
25	65
26	68
27	71

LENGTH IN FEET	TOTAL WATTAGE
28	73
29	76
30	78
31	81
32	84
33	86
34	89
35	91

ACTUAL WATTAGE PER FOOT - WHITE LEDS

LENGTH IN FEET	TOTAL WATTAGE
1	3
2	5
3	8
4	10
5	13
6	15
7	17
8	20
9	22
10	25

LENGTH IN FEET	TOTAL WATTAGE
11	27
12	29
13	32
14	34
15	37
16	39
17	41
18	44
19	46
20	48

LENGTH IN FEET	TOTAL WATTAGE
21	51
22	54
23	56
24	58
25	61
26	63
27	66
28	68
29	70
30	73

LENGTH IN FEET	TOTAL WATTAGE
31	75
32	78
33	80
34	82
35	85
36	87
37	90
38	92
39	94
40	96

COMPANY		FIXTURE TYPE		DATE	
PROJECT		APPROVED BY			

Product specification subject to change without notification. REV. 06.30.14

A Division of PureEdge Lighting 1718 W. Fullerton Chicago, IL 60614 • Ph: 773.770.1196 • Fax: 773.883.6128 • www.purelighting.com

